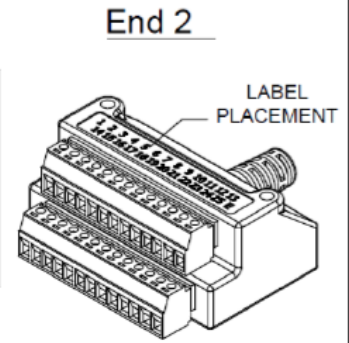
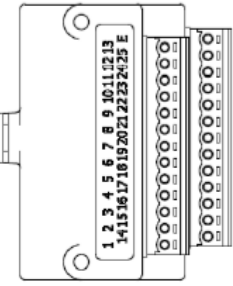
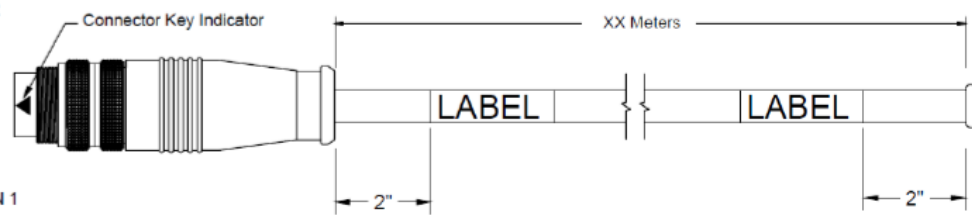
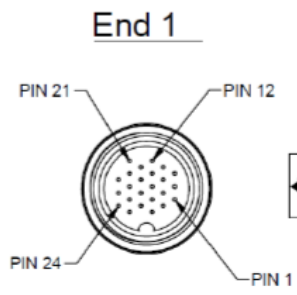



REV	DESCRIPTION	DATE	DWN. BY
A	Initial Drawing	06/29/2019	Artur Didyk

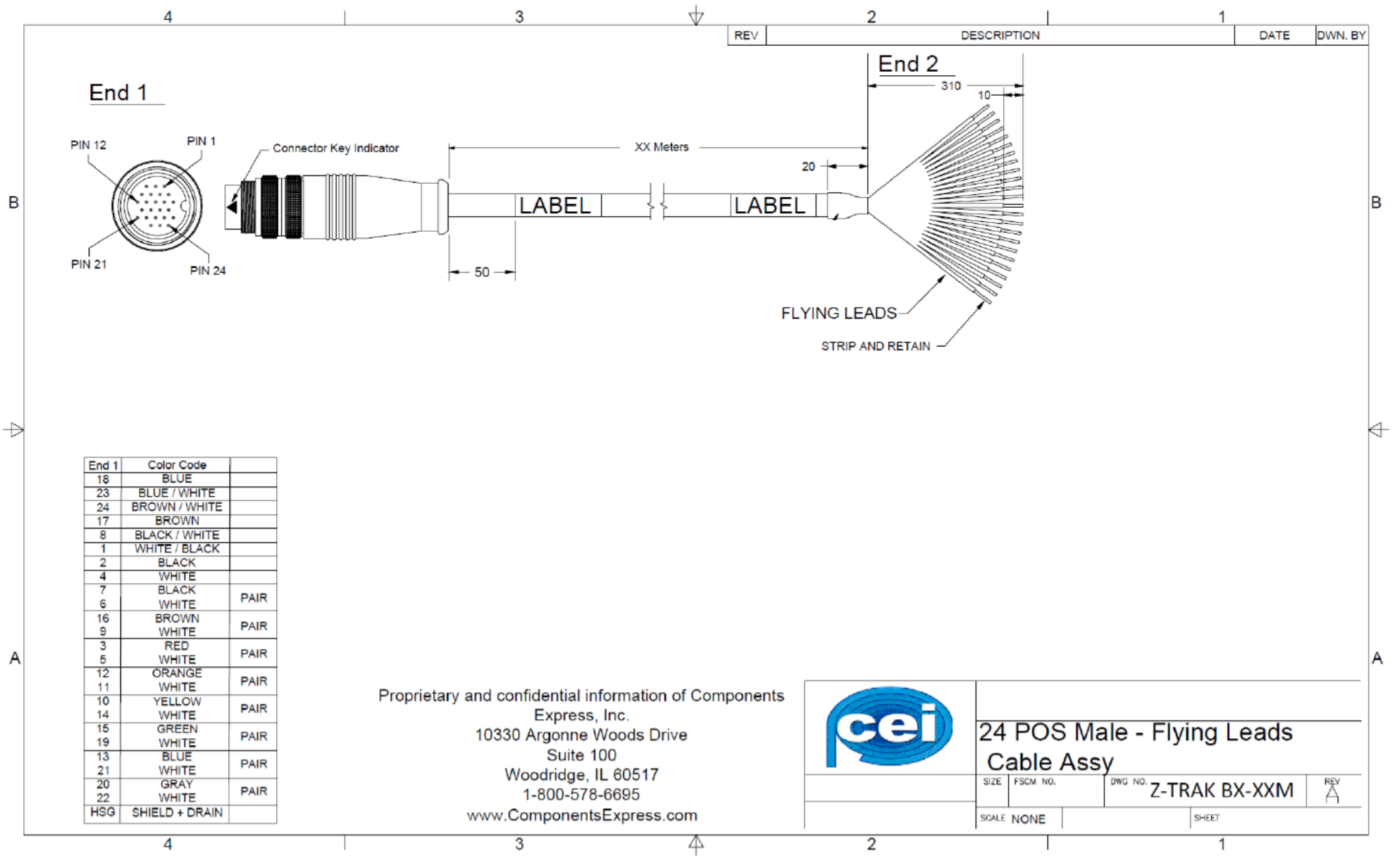


Proprietary and confidential information of Components Express, Inc.  
 10330 Argonne Woods Drive  
 Suite 100  
 Woodridge, IL 60517  
 1-800-578-6695  
 www.ComponentsExpress.com

	24 POS Male - 24 Pos Euro Block Cable Assy		
	SIZE	FSCM NO.	DWG NO. Z-TRAK BER-XXM
SCALE NONE		SHEET	


NOTES:

REV	DESCRIPTION	DATE	DWN. BY
-----	-------------	------	---------

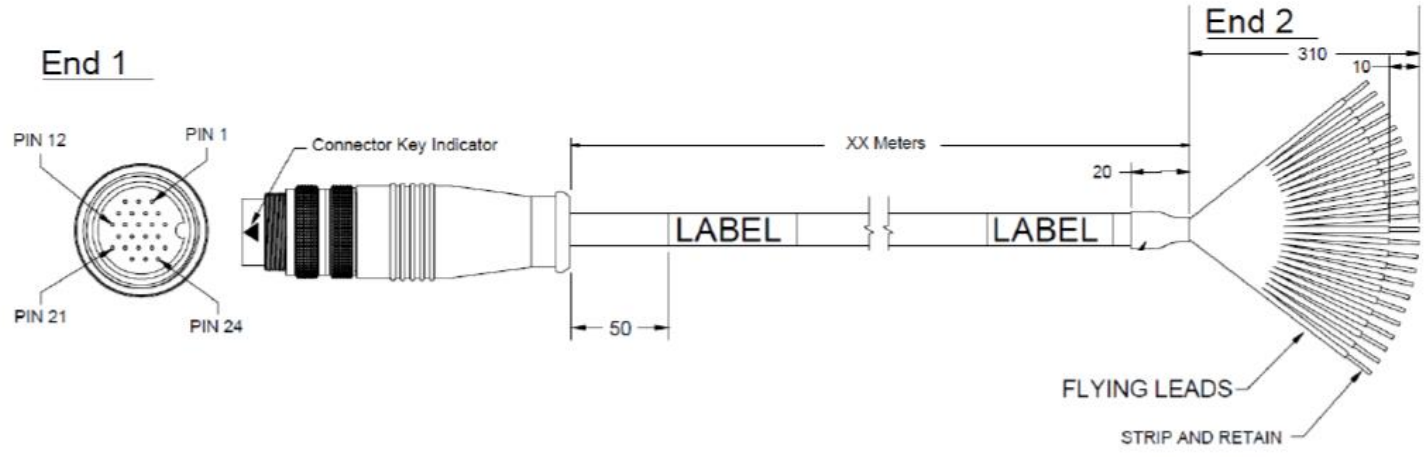


End 1	Color Code	
18	BLUE	
23	BLUE / WHITE	
24	BROWN / WHITE	
17	BROWN	
8	BLACK / WHITE	
1	WHITE / BLACK	
2	BLACK	
4	WHITE	
7	BLACK	PAIR
6	WHITE	PAIR
16	BROWN	PAIR
9	WHITE	PAIR
3	RED	PAIR
5	WHITE	PAIR
12	ORANGE	PAIR
11	WHITE	PAIR
10	YELLOW	PAIR
14	WHITE	PAIR
15	GREEN	PAIR
19	WHITE	PAIR
13	BLUE	PAIR
21	WHITE	PAIR
20	GRAY	PAIR
22	WHITE	PAIR
HSG	SHIELD + DRAIN	

Proprietary and confidential information of Components Express, Inc.  
 10330 Argonne Woods Drive  
 Suite 100  
 Woodridge, IL 60517  
 1-800-578-6695  
 www.ComponentsExpress.com


		<b>24 POS Male - Flying Leads Cable Assy</b>	
		SIZE	FSCM NO.
SCALE NONE		SHEET	

REV	DESCRIPTION	DATE	DWN. BY
A	Initial Drawing	06/29/2019	Artur Didyk



End 1	Color Code	
18	BLUE	
23	ORANGE	
24	GREEN	
17	BROWN	
8	GRAY	
1	VIOLET	
2	BLACK	
4	WHITE	
7	BLACK/WHITE	PAIR
6	WHITE/BLACK	PAIR
16	BROWN/WHITE	PAIR
9	WHITE/BROWN	PAIR
3	RED/WHITE	PAIR
5	WHITE/RED	PAIR
12	ORANGE/WHITE	PAIR
11	WHITE/ORANGE	PAIR
10	YELLOW/WHITE	PAIR
14	WHITE/YELLOW	PAIR
15	GREEN/WHITE	PAIR
19	WHITE/GREEN	PAIR
13	BLUE/WHITE	PAIR
21	WHITE/BLUE	PAIR
20	GRAY/WHITE	PAIR
22	WHITE/GRAY	PAIR
HSG	SHIELD + DRAIN	

Proprietary and confidential information of Components Express, Inc.  
 10330 Argonne Woods Drive  
 Suite 100  
 Woodridge, IL 60517  
 1-800-578-6695  
 www.ComponentsExpress.com

		<b>24 POS Male - Flying Leads Cable Assy</b>	
		SIZE PSCM NO.	DWG NO. <b>Z-TRAK BXR-XXM</b>
SCALE NONE		SHEET	